

SPECIFICATION



www.extrasynthese.com

(+)-Longifolene

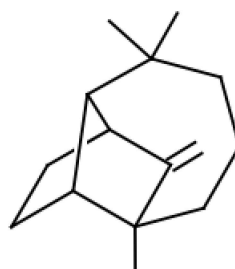
REF 5395 S

Chemical family SESQUITERPENE

CAS Number [475-20-7]

Empirical formula C₁₅H₂₄

Molecular weight 204,36



Long term storage Store at <+8°C

Store in dry and dark place.

Shipment conditions Ambient temperature

Appearance Liquid

[α]_D +(45±3)° in substance

Purity (GC) ≥95%

This product is delivered with GC chromatogram