

# SPECIFICATION



www.extrasynthese.com

## R-(-)-alpha-Phellandrene

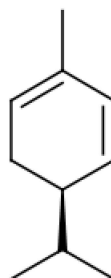
REF 5411 S

Chemical family MONOTERPENE

CAS Number [4221-98-1]

Empirical formula C<sub>10</sub>H<sub>16</sub>

Molecular weight 136,24



Classification



Flammable Liquids (Category 3) (H226)

Long term storage

Store at <-15°C

HIGHLY UNSTABLE

Store in dry and dark place.

Shipment conditions

In a styrofoam box with ice pack

Appearance

Liquid

[α]<sub>D</sub> -(230 ± 10)° c=10 in diethylether

Purity (GC)

≥95% (sum of enantiomers)  
with BHT as inhibitor

This product is delivered with GC chromatogram