

SPECIFICATION



www.extrasynthese.com

Cuminaldehyde

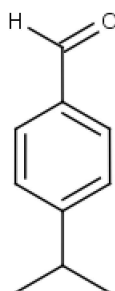
REF 5164 S

Chemical family MONOTERPENE

CAS Number [122-03-2]

Empirical formula C₁₀H₁₂O

Molecular weight 148,21



Classification



Acute oral toxicity (Category 4) (H302) ; Acute dermal toxicity (Category 4) (H312) ; Acute inhalation toxicity (Category 4) (H332) ; Skin Irritation (Category 2) (H315) ; Eye Irritation (Category 2) (H319) ; Specific Target Organ Toxicity - Single Exposure (Category 3) (H335)

Long term storage

Store at <+8°C

Store in dry and dark place.

Shipment conditions

Ambient temperature

Appearance

Liquid

Purity (GC)

≥90%

This product is delivered with GC chromatogram