

# SPECIFICATION

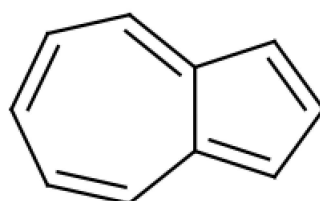


www.extrasynthese.com

## Azulene

REF 5003

<u>Chemical family</u>	MONOTERPENE
<u>CAS Number</u>	[275-51-4]
<u>Empirical formula</u>	C <sub>10</sub> H <sub>8</sub>
<u>Molecular weight</u>	128,17



### Classification



Hazardous to the aquatic environment (Category 2) (H411)

### Long term storage

Store at <+8°C

Store in dry and dark place.

### Shipment conditions

Ambient temperature

---

Appearance Dark blue Powder

Purity (GC) ≥95%