

# SPECIFICATION



www.extrasynthese.com

## alpha-Sophorose

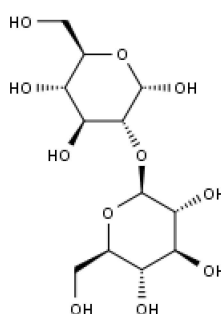
REF 4278

Chemical family OLIGOSACCHARIDE

CAS Number [20880-64-2]

Empirical formula C<sub>12</sub>H<sub>22</sub>O<sub>11</sub>

Molecular weight 342,30



Long term storage Store at <+8°C

Store in dry and dark place.

Shipment conditions Ambient temperature

Appearance White to beige coloured Powder

Melting point 192-202°C

[α]<sub>D</sub> +30°-----> +19°  
(c=1 in water)