

# SPECIFICATION



www.extrasynthese.com

## Lactucopicrin

REF 3813

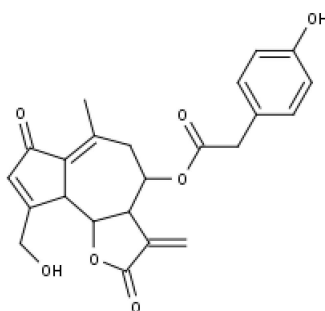
Chemical family SESQUITERPENE

Synonym Lactupicrin

CAS Number [65725-11-3]

Empirical formula  $C_{23}H_{22}O_7$

Molecular weight 410,43



Long term storage Store at  $<+8^{\circ}\text{C}$

Store in dry and dark place.

Shipment conditions Ambient temperature

Appearance White to beige coloured Powder

Purity (HPLC)  $\geq 95\%$