

SPECIFICATION

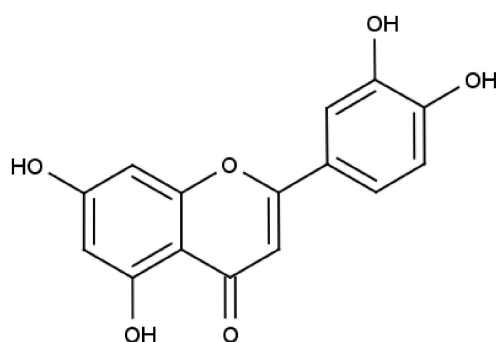


www.extrasynthese.com

Luteolin

REF 1125 S

<u>Chemical family</u>	FLAVONOID / Flavone
<u>Synonym</u>	3',4',5,7-Tetrahydroxyflavone
<u>CAS Number</u>	[491-70-3]
<u>Empirical formula</u>	C ₁₅ H ₁₀ O ₆
<u>Molecular weight</u>	286,25



Classification



Skin Irritation (Category 2) (H315) ; Eye Irritation (Category 2) (H319) ; Specific Target Organ Toxicity - Single Exposure (Category 3) (H335)

Long term storage

Store at <+8°C

Store in dry and dark place.

Transport conditions

Ambient temperature

Appearance

Yellow Powder

Assay (HPLC)

This product is delivered with HPLC chromatogram

≥99%