

SPECIFICATION

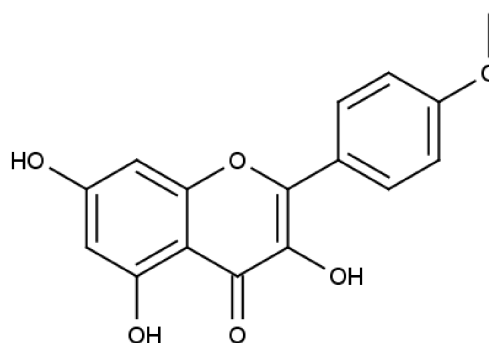


www.extrasynthese.com

Kaempferide

REF 1123 S

<u>Chemical family</u>	FLAVONOID / Flavonol
<u>Synonym</u>	3,5,7-Trihydroxy-4'-methoxyflavone ; Kaempferol-4'-methylether
<u>CAS Number</u>	[491-54-3]
<u>Empirical formula</u>	C ₁₆ H ₁₂ O ₆
<u>Molecular weight</u>	300,28



<u>Long term storage</u>	Store at <+8°C Store in dry and dark place.
<u>Transport conditions</u>	Ambient temperature

Appearance Yellow Powder

Assay (HPLC) $\geq 99\%$
This product is delivered with HPLC chromatogram