

# SPECIFICATION

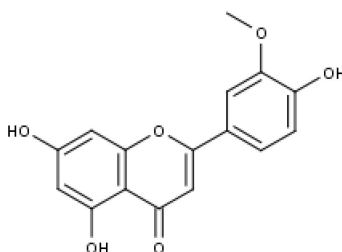


www.extrasynthese.com

## Chrysoeriol

REF 1104 S

<u>Chemical family</u>	FLAVONOID / Flavone
<u>Synonym</u>	Luteolin-3'-methylether ; 4',5,7-Trihydroxy-3'-methoxyflavone
<u>CAS Number</u>	[491-71-4]
<u>Empirical formula</u>	C <sub>16</sub> H <sub>12</sub> O <sub>6</sub>
<u>Molecular weight</u>	300,28



<u>Long term storage</u>	Store at <+8°C Store in dry and dark place.
<u>Shipment conditions</u>	Ambient temperature

Appearance	Yellow to lightly yellow Powder
Purity (HPLC) This product is delivered with HPLC chromatogram	≥99%