

SPECIFICATION

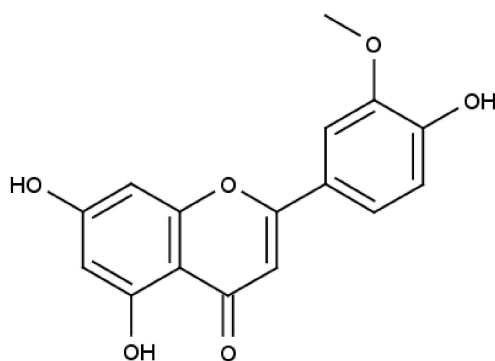


www.extrasynthese.com

Chrysoeriol

REF 1104 S

<u>Chemical family</u>	FLAVONOID / Flavone
<u>Synonym</u>	Luteolin-3'-methylether ; 4',5,7-Trihydroxy-3'-methoxyflavone
<u>CAS Number</u>	[491-71-4]
<u>Empirical formula</u>	C ₁₆ H ₁₂ O ₆
<u>Molecular weight</u>	300,28



<u>Long term storage</u>	Store at <+8°C Store in dry and dark place.
<u>Transport conditions</u>	Ambient temperature

Appearance Yellow to lightly yellow Powder

Assay (HPLC) $\geq 99\%$
This product is delivered with HPLC chromatogram