

# SPECIFICATION

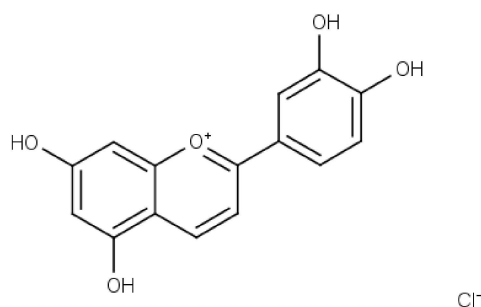


www.extrasynthese.com

## Luteolinidin chloride

REF 0925 S

<u>Chemical family</u>	ANTHOCYANIN / Miscellaneous
<u>Synonym</u>	3',4',5,7-Tetrahydroxyflavylium chloride
<u>CAS Number</u>	[1154-78-5]
<u>Empirical formula</u>	C <sub>15</sub> H <sub>11</sub> O <sub>5</sub> Cl
<u>Molecular weight</u>	306,68



<u>Long term storage</u>	Store at <-15°C Store in dry and dark place.
<u>Transport conditions</u>	In a styrofoam box with ice pack

---

Appearance	Powder
U.V / Visible spectrum	$\epsilon$ 35000 $\pm$ 3000 498 nm in methanol + 0.1% HCl
Assay (HPLC) This product is delivered with HPLC chromatogram	$\geq 90\%$