

# SPECIFICATION

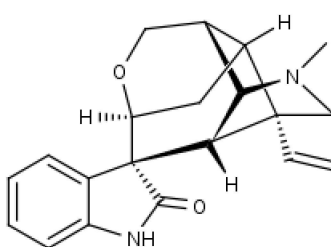


www.extrasynthese.com

## Gelsemine

REF 0619

<u>Chemical family</u>	ALKALOID / Indole
<u>CAS Number</u>	[509-15-9]
<u>Empirical formula</u>	C <sub>20</sub> H <sub>22</sub> N <sub>2</sub> O <sub>2</sub>
<u>Molecular weight</u>	322,41



### Classification



Acute oral toxicity (Category 3) (H301) ; Acute inhalation toxicity (Category 3) (H331)

### Long term storage

Store at <+8°C

Store in dry and dark place.

### Shipment conditions

Ambient temperature

---

Appearance	White to beige coloured Powder
Melting point	174-180°C
N Content	(8.7 ± 0.5)%
Purity (HPLC)	≥95%