

Certificate of analysis

Product name: **qRE Passiflora incarnata L., aerial parts**
Substance: Passiflora incarnata L., aerial parts dry extract
Plant source common names: en: Purple passionflower ; fr: Passiflore
Reference: E0014
Batch: RE0014001
Fabrication date: 2019-09
Retest date: 2020-09
Storage conditions: Keep container closed. Protect from light and moisture. Keep at -18 °C

PLANT SOURCE

Botanical identification

Botanical garden location: Cruas, Ardèche
Reference: Flora of North America
http://www.efloras.org/florataxon.aspx?flora_id=1&taxon_id=220009998
Analysis No: IDJB-0013
Requirement: Conform to reference
Result: **COMPLIES**

DRY EXTRACT

Analysis No

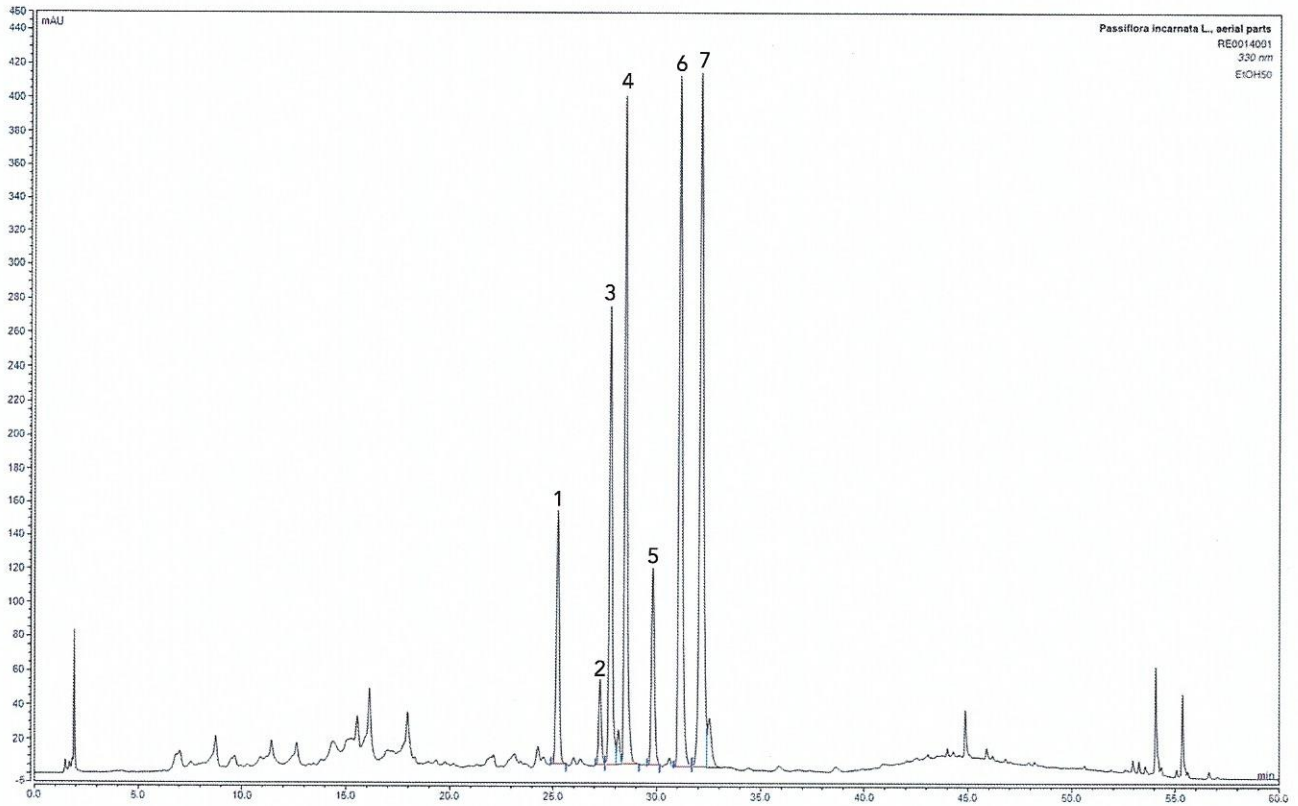
CA-EXT-0014

Organoleptic characteristics

Colour: Brown green
Odour: Non characteristic
Form: Fine powder

HPLC

According to analysis reference: TD-E0014-03.100



Concentration of non-plant compounds in dry extract

Residual water content:	10.5 %
Residual EtOH content:	< 0.1%
Added fumed silica (excipient):	5 %

Concentration of compounds in extract

NB: Concentrations are given in relation to total extract including residual water and added silica.

Compound	Peak No	Concentration % (w/w)	Relative standard error %
Vicenin 2	1	0.12	7.5
Isoschaftoside OR apigenin-6-C-pentoside-8-C-glucoside	2	< 0.01	7.5
Isoschaftoside OR apigenin-6-C-pentoside-8-C-glucoside	3	0.25	7.5
Schaftoside	4	0.26	7.5
Vitexin	5	0.095	4.5
Vitexin-2''-O-glucoside OR isovitexin-2''-O-glucoside	6	0.43	7.5
Isovitexin	7	0.44	4.5

Date: 2019-11-21

Verified and released by Dr. Daniel Jean, Head of Laboratory:

ISV Institut des
substances
végétales
19 rue Patrick Depailler
63000 CLERMONT-FERRAND
Tél. 04 73 69 15 39