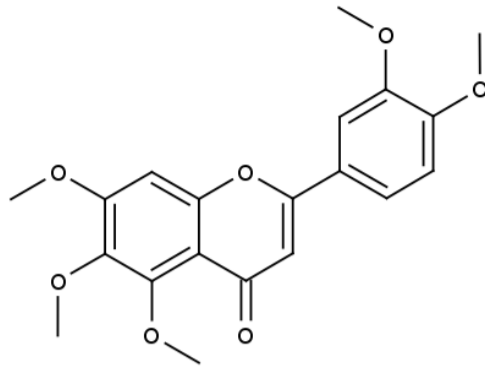
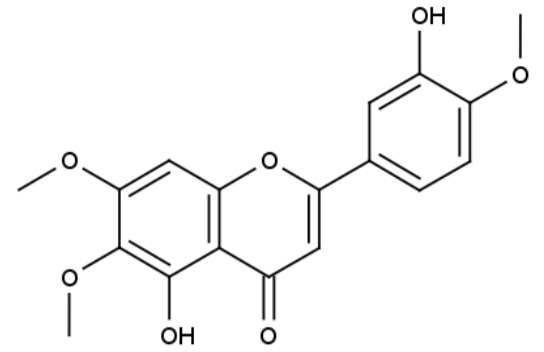


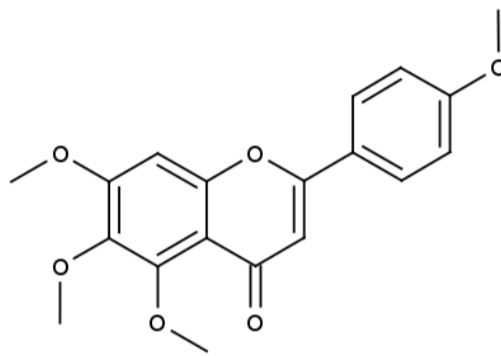
# FLAVONOIDS MARKERS SET SPECIFIC TO JAVA TEA



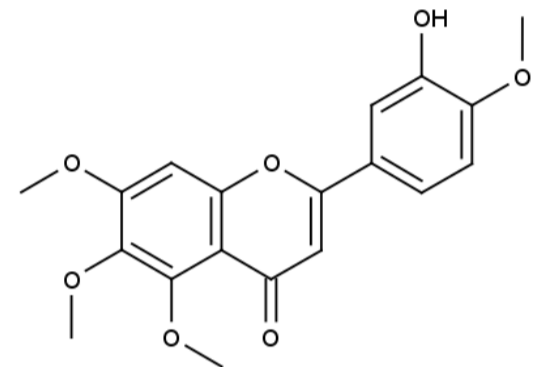
**SINENSETIN**  
Extrasynthese # 1326S



**EUPATORIN**  
Extrasynthese # 1014



**SCUTELLAREIN  
TETRAMETHYLETHER**  
Extrasynthese # 1278



**EUPATORIN  
5-METHYLETHER**  
Extrasynthese # 1015

Java Tea is a popular Asian herbal tea made from *Orthosiphon stamineus* ( syn: *Orthosiphon aristatus* ) dried leaves. *Orthosiphon* contains high level of phenolic compounds such as Sinensetin and Rosmarinic acid. In the class of flavonoids, Sinensetin is therefore usually selected as a reference substance for analytical monographs, like in European Pharmacopeia. However this substance can be found in other species like *Citrus sp.* or *Salvia sp.*

In a technical note study published in CBS 115 (2015) 13-15, EXTRASYNTHÈSE and CAMAG have proposed a complete set of flavonoids standards, including Sinensetin and three other 6-hydroxylated flavones, for an HPTLC footprint analysis of Java Tea. This set of standards:

- Sinensetin CAS RN 2306-27-6
- Scutellarein Tetramethylether CAS RN 1168-42-9
- Eupatorin CAS RN 855-96-9
- Eupatorin 5-Methylether CAS RN 21764-09-0

is specific to *Orthosiphon* species, compared to other species containing Sinensetin. HPTLC methods and records, as well as HPTLC-MS and UV data are reported in the study.

All standards are commercially available at EXTRASYNTHÈSE, and full text of technical note will be provided on request.

## References :

- (1) Tezura and coll., Chem Pharm Bull 48(11), 1711-1719 (2000)
- (2) Sumaryono and coll., Planta Med 57 (1991), 176-180
- (3) Akowuah and coll., Food chemistry, 87(4), 2004, 559-566

**Contact :** [info@extrasynthese.com](mailto:info@extrasynthese.com)

**WWW.EXTRASYNTHÈSE.COM**