

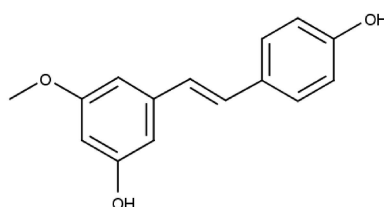
SPECIFICATION



Pinostilbene

REF 4970 S

<u>Chemical family</u>	PHENYLPROPANOID / Stilbene
<u>Synonym</u>	Resveratrol-3-methylether
<u>CAS Number</u>	42438-89-1
<u>Empirical formula</u>	C ₁₅ H ₁₄ O ₃
<u>Molecular weight</u>	242,28



Classification



Skin Irritation (Category 2) (H315) ; Serious Eye Damage (Category 1) (H318) ; Specific Target Organ Toxicity - Single Exposure (Category 3) (H335)

Long term storage

Store at <+8°C

Store in dry and dark place.

Shipment conditions

Ambient temperature

Appearance

White to beige coloured Powder

Purity (HPLC)

≥98%

This product is available with HPLC chromatogram