

SPECIFICATION



www.extrasynthese.com

(-)-Bilobalide

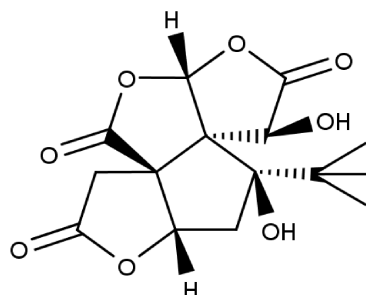
REF 3815 S

Chemical family SESQUITERPENE

CAS Number [33570-04-6]

Empirical formula C₁₅H₁₈O₈

Molecular weight 326,30



Long term storage

Store at <+8°C

Store in dry and dark place.

Shipment conditions

Ambient temperature

Appearance

White to beige coloured Powder

Purity (HPLC)

≥99%

This product is available with HPLC chromatogram