

SPECIFICATION

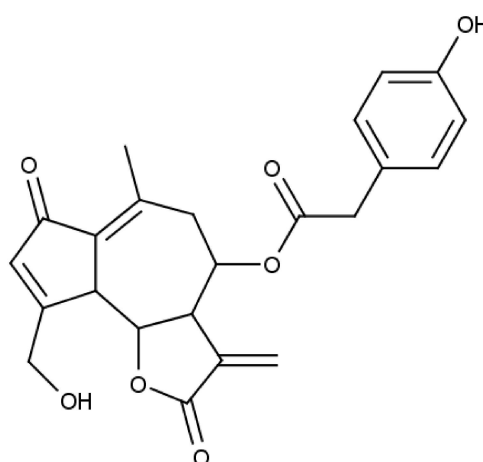


www.extrasynthese.com

Lactucopicrin

REF 3813

<u>Chemical family</u>	SESQUITERPENE
<u>Synonym</u>	Lactupicrin ; Intybin
<u>CAS Number</u>	[65725-11-3]
<u>Empirical formula</u>	$C_{23}H_{22}O_7$
<u>Molecular weight</u>	410,43



<u>Long term storage</u>	Store at $<+8^{\circ}\text{C}$ Store in dry and dark place.
<u>Shipment conditions</u>	Ambient temperature

Appearance	White to beige coloured Powder
Purity (HPLC)	$\geq 95\%$