

SPECIFICATION

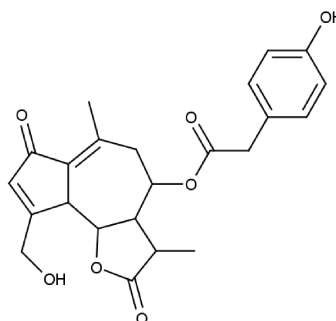


www.extrasynthese.com

11beta,13-Dihydrolactucopirin

REF 3811

<u>Chemical family</u>	SESQUITERPENE
<u>CAS Number</u>	[125519-47-3]
<u>Empirical formula</u>	C ₂₃ H ₂₄ O ₇
<u>Molecular weight</u>	412,44



<u>Long term storage</u>	Store at <+8°C Store in dry and dark place.
<u>Shipment conditions</u>	Ambient temperature

Appearance	White to beige coloured Powder
Purity (HPLC)	≥95%