

SPECIFICATION

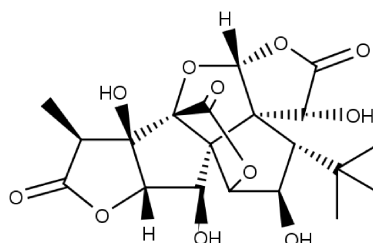


www.extrasynthese.com

Ginkgolide C

REF 3730 S

<u>Chemical family</u>	DITERPENE / Ginkgolide
<u>Synonym</u>	1,7-Dihydroxyginkgolide A
<u>CAS Number</u>	[15291-76-6]
<u>Empirical formula</u>	C ₂₀ H ₂₄ O ₁₁
<u>Molecular weight</u>	440,41



<u>Long term storage</u>	Store at <+8°C Store in dry and dark place.
<u>Shipment conditions</u>	Ambient temperature

Appearance	White to beige coloured Powder
Purity (HPLC) This product is available with HPLC chromatogram	≥98%