

SPECIFICATION

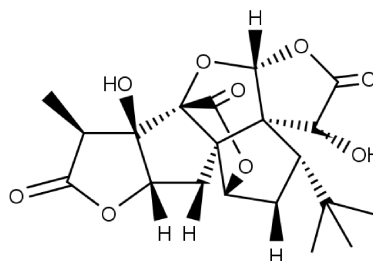


www.extrasynthese.com

Ginkgolide A

REF 3728 S

| | |
|--------------------------|--|
| <u>Chemical family</u> | DITERPENE / Ginkgolide |
| <u>Synonym</u> | 1,7-Dideoxyginkgolide C |
| <u>CAS Number</u> | [15291-75-5] |
| <u>Empirical formula</u> | C ₂₀ H ₂₄ O ₉ |
| <u>Molecular weight</u> | 408,41 |



| | |
|----------------------------|--|
| <u>Long term storage</u> | Store at <+8°C Store in dry and dark place. |
| <u>Shipment conditions</u> | Ambient temperature |

| | |
|---|--------------------------------|
| Appearance | White to beige coloured Powder |
| Purity (HPLC) This product is available with HPLC chromatogram | ≥98% |