

SPECIFICATION



beta-Boswellic acid

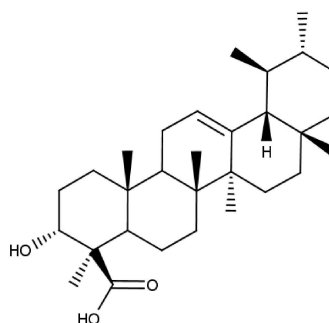
REF 2316 S

Chemical family TRITERPENE / Boswellic

CAS Number 631-69-6

Empirical formula $C_{30}H_{48}O_3$

Molecular weight 456,71



Long term storage Store at $<+8^{\circ}\text{C}$
Store in dry and dark place.

Shipment conditions Ambient temperature

Appearance White to beige coloured Powder

Purity (HPLC) $\geq 97\%$
This product is available with HPLC chromatogram