

SPECIFICATION



www.extrasynthese.com

Protopanaxadiol

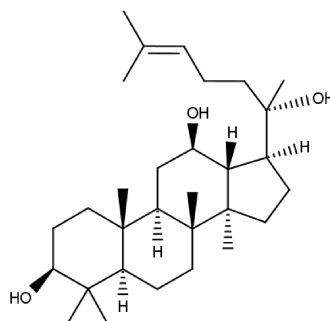
REF 2308

Chemical family TRITERPENE / Ginsenoside

CAS Number [30636-90-9]

Empirical formula C₃₀H₅₂O₃

Molecular weight 460,74



Long term storage

Store at <-15°C

Store in dry and dark place.

Shipment conditions

Ambient temperature

Appearance

White to beige coloured Powder

Purity (HPLC)

≥95%