

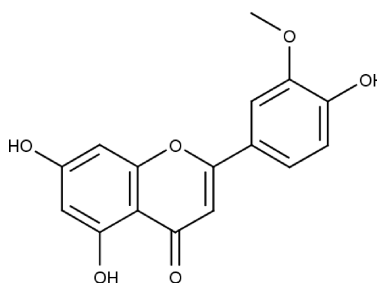
SPECIFICATION



Chrysoeriol

REF 1104 S

<u>Chemical family</u>	FLAVONOID / Flavone
<u>Synonym</u>	Luteolin-3'-methylether ; 4',5,7-Trihydroxy-3'-methoxyflavone
<u>CAS Number</u>	[491-71-4]
<u>Empirical formula</u>	C ₁₆ H ₁₂ O ₆
<u>Molecular weight</u>	300,28



<u>Long term storage</u>	Store at <+8°C Store in dry and dark place.
<u>Shipment conditions</u>	Ambient temperature

<u>Appearance</u>	Yellow to lightly yellow Powder
<u>Purity (HPLC)</u> This product is available with HPLC chromatogram	≥99%