

SPECIFICATION

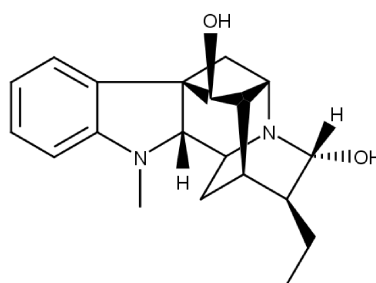


www.extrasynthese.com

Ajmaline

REF 0623

<u>Chemical family</u>	ALKALOID / Indole
<u>Synonym</u>	Rauwolfine
<u>CAS Number</u>	[4360-12-7]
<u>Empirical formula</u>	C ₂₀ H ₂₆ N ₂ O ₂
<u>Molecular weight</u>	326,44



Classification



Acute oral toxicity (Category 4) (H302) ; Acute dermal toxicity (Category 4) (H312) ; Acute inhalation toxicity (Category 4) (H332) ; Skin Irritation (Category 2) (H315) ; Eye Irritation (Category 2) (H319) ; Specific Target Organ Toxicity - Single Exposure (Category 3) (H335)

Long term storage

Store at <+8°C

Store in dry and dark place.

Shipment conditions

Ambient temperature

Appearance

White to beige coloured Powder

Purity (HPLC)

≥90%