

DATASHEET

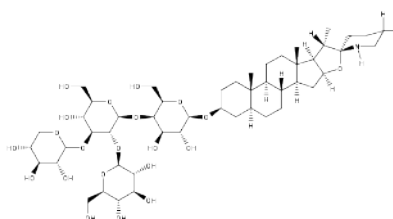


www.extrasynthese.com

Tomatine

REF 0602

<u>Chemical family</u>	PHYTOSTEROID / Glycoalkaloid
<u>CAS Number</u>	17406-45-0
<u>Empirical formula</u>	C ₅₀ H ₈₃ NO ₂₁
<u>Molecular weight</u>	1 034,21



Classification



Acute oral toxicity (Category 4) (H302)

Long term storage

Store at <+8°C

Store in dry and dark place.

Shipment conditions

Ambient temperature

Appearance

Powder

Purity (HPLC)

≥95%