

# SPECIFICATION



www.extrasynthese.com

## Catalpol

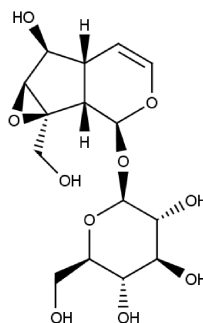
REF 0233 S

Chemical family MONOTERPENE / Iridoid

CAS Number [2415-24-9]

Empirical formula C<sub>15</sub>H<sub>22</sub>O<sub>10</sub>

Molecular weight 362,34



Long term storage

Store at <+8°C

Store in dry and dark place.

Shipment conditions

Ambient temperature

Appearance

White to beige coloured Powder

Purity (HPLC)

≥99%

This product is available with HPLC chromatogram