

# SPECIFICATION



www.extrasynthese.com

## Swertamarin

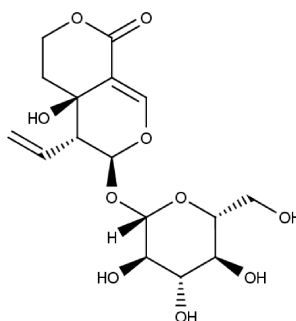
REF 0226 S

Chemical family MONOTERPENE / Iridoid

CAS Number [17388-39-5]

Empirical formula C<sub>16</sub>H<sub>22</sub>O<sub>10</sub>

Molecular weight 374,35



Long term storage

Store at <+8°

Store in dry and dark place.

Shipment conditions

Ambient temperature

Appearance

White to beige coloured Powder

Purity (HPLC)

≥98%

This product is available with HPLC chromatogram