

DATASHEET



www.extrasynthese.com

Sweroside

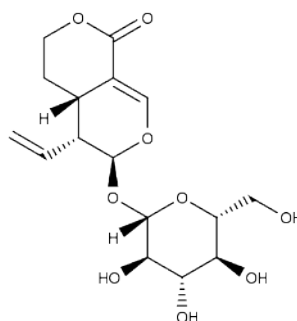
REF 0225 S

Chemical family MONOTERPENE / Iridoid

CAS Number 14215-86-2

Empirical formula C₁₆H₂₂O₉

Molecular weight 358,35



Long term storage

Store at <+8°C

Store in dry and dark place.

Shipment conditions

Ambient temperature

Appearance

White to beige coloured Powder

Purity (HPLC)

≥98%

This product is available with HPLC chromatogram